



San Bernardino County Transportation Authority

# WEST VALLEY CONNECTOR

Overall FTA Project  
DBE Goal Methodology

Submitted in fulfillment of:  
Title 49 Code of Federal Regulations Part 26

## TABLE OF CONTENTS

I.	INTRODUCTION .....	3
II.	FTA-ASSISTED CONTRACTING PROGRAM .....	4
	MARKET AREA .....	4
	CATEGORIES OF WORK .....	4
III.	PROPOSED OVERALL DBE GOAL – METHODOLOGY.....	5
	A. STEP 1: DETERMINATION OF A BASE FIGURE (26.45).....	5
	B. STEP 2: ADJUSTING THE BASE FIGURE.....	7
	Past OmniTrans DBE Goal Attainments/Commitments .....	7
	OmniTrans’ Bidders List.....	7
	Evidence from Disparity Studies.....	7
	Other Agency DBE Goals.....	7
	Other Evidence .....	8
	C. RACE-NEUTRAL/RACE-CONSCIOUS PROJECTIONS .....	8
IV.	GOAL APPLICATION .....	8
V.	RACE-NEUTRAL IMPLEMENTATION MEASURES .....	9
VI.	FOSTERING SMALL BUSINESS PARTICIPATION.....	10
VII.	PUBLIC PARTICIPATION AND FACILITATION.....	11
	ATTACHMENT 1.....	12
	ATTACHMENT 2.....	13
	ATTACHMENT 3.....	14
	ATTACHMENT 4.....	20

## I. INTRODUCTION

### WEST VALLEY CONNECTOR

The West Valley Connector Project (WVC) is a 35-mile-long transit improvement project that would connect the cities of Pomona, Montclair, Ontario, Rancho Cucamonga, and Fontana. The WVC includes up to 60 station platforms at 33 locations/major intersections and associated improvements. The WVC will be constructed in two phases, including Phase I/Milliken Alignment, from the Pomona Regional Transit Center to Victoria Gardens in Rancho Cucamonga and Phase II/Haven Alignment, from Ontario International Airport to Kaiser Permanente Medical Center in Fontana. Phase I is scheduled for operation in early 2023. Construction of Phase II/Haven Alignment is scheduled to occur after the completion of Phase I when funding is available. Stations would be “rapid bus” style stations designed for fast boarding.

The purpose of the WVC is to improve corridor mobility and transit efficiency in the western San Bernardino Valley from the city of Pomona, in Los Angeles County, to the city of Fontana, in San Bernardino County, with an enhanced, state-of-the-art BRT system (i.e., the system that includes off-board fare vending, all-door boarding, TSP, optimized operating plans, and stations that consist of a branded shelter/canopy, security cameras, benches, lighting, and variable message signs). The WVC addresses the growing traffic congestion and travel demands of the nearly one million people that would be added to Los Angeles and San Bernardino County by 2040 per Southern California Association of Governments’ 2016 Regional Transportation Plan/Sustainable Communities Strategy growth forecast. Improved rapid transit along the project corridor will help Omnitrans/SBCTA achieve its long-range goals to cost effectively enhance lifeline mobility and accessibility, improve transit operations, increase ridership, support economic growth and redevelopment, conserve nonrenewable resources, and improve corridor safety.

### PROJECT DBE GOAL

When the Omnitrans overall DBE goal was developed for the triennial period for Federal Fiscal Years (FFYs) 2019 to 2021, it was determined that the WVC would have a significant impact to the goal. Omnitrans elected to develop a separate overall DBE project goal for specific portions of the WVC for the Phase 1/Milliken alignment, specifically mainline construction, construction management, and project management (Project), as they would have the greatest impact on the overall DBE goal. Some of the early WVC work, including contracts for environmental services, right-of-way acquisitions, and right-of-way legal support were awarded as task orders to existing on-call contracts and are not included in this DBE project goal calculation. The mainline construction project for Phase 1 is anticipated to start in March 2022 and is scheduled for completion in 2024.

The mainline construction and construction management contracts are estimated at approximately \$120 million with 54% of the Project costs utilizing Federal Transit Administration (FTA) funds.

TABLE 1

Description	Amount
Mainline Construction	\$93,670,680
Construction Management	\$16,864,538
Program Management	\$10,118,723
<b>Total WVC Project Cost</b>	<b>\$120,653,941</b>

As a direct recipient of FTA funds, Omnitrans will reallocate FTA funds to the San Bernardino County Transportation Authority (SBCTA) as a subrecipient for the West Valley Connector Project. While Omnitrans retains ultimate responsibility for the administration and management of the DBE program on this Project, however the day-to-day DBE monitoring and reporting remain the responsibility of SBCTA.

### **PROPOSED PROJECT DBE GOAL**

Omnitrans seeks concurrence from FTA to express the mainline construction, construction management, and project management DBE goal as a project goal (hereinafter Overall Project DBE Goal) for the West Valley Connector Project (Construction Mainline) in accordance with 25.45 (e) of the DBE Program regulations. Omnitrans does not have demonstrable evidence on-hand of discrimination in its transportation contracting program, therefore, Omnitrans adopted a wholly race-neutral Overall Project DBE Goal. In accordance with DOT guidance from Western States, a race conscious component is not included for this goal.

Omnitrans herein sets forth its proposed Overall Project DBE Goal and corresponding methodology in accordance with 49 CFR Part 26 requirements. **The proposed Overall Project DBE Goal covers the WVC Project period between 2022 and 2024** and is separate and apart from Omnitrans' existing FTA Overall DBE Goal for Federal Fiscal Years (FFY) 2019 through 2021. The Proposed Overall Project DBE Goal is 8.5% of the total anticipated project cost for mainline construction, construction management, and project management. The goal is representative of the relative availability of ready, willing and able DBEs with offices located within Omnitrans' defined market area to all comparable businesses which are known to be available to compete for the contracting opportunities. The methodology also took into consideration Omnitrans' past DBE goal attainments/commitments to the extent applicable, other project DBE goals, and other relevant evidence. Sections II and III delineate the methodology undertaken to establish the proposed Overall Project DBE Goal for this wholly race-neutral project.

## **II. FTA-ASSISTED CONTRACTING PROGRAM**

---

### **MARKET AREA**

The Federal DBE Program requires agencies to implement the DBE Program based on information from the relevant geographic market area—the area in which the agency spends the substantial majority of its contracting dollars. Omnitrans' local market for contracts consists of a geographic area that is:

- where a large majority of contracting dollars is expended, and
- where a substantial number of contractors and subcontractors are located and available to submit bids, quotes, or proposals.

For this overall project DBE goal, Omnitrans' and its subrecipient's bidder's lists were reviewed and analyzed to determine where the substantial majority of contracting dollars will be spent. The review confirmed the recognized market area of San Bernardino county. The Project extends to Los Angeles County, therefore, Omnitrans has increased the market area to include Los Angeles County for this overall project DBE goal.

### **CATEGORIES OF WORK**

Omnitrans reviewed and determined the applicable categories of work for the Project using North American Industry Classification System (NAICS) codes. The corresponding dollar values for each NAICS code were summarized for purposes of weighting the categories of work based on the staff estimates. Table 2 provides a summary of the categories of work with estimated dollars for each.

- Column A lists the category of work (NAICS) code and title.
- Column B lists the estimated dollars for each NAICS code.
- Column C lists the estimated percentage of each NAICS code (the estimated dollars for each NAICS code divided by the grand total of all estimated dollars).

TABLE 2

A	B	C
NAICS Code: Category of Work	Est. \$ by NAICS	Est. % by NAICS
236220: Commercial and institutional building construction	\$28,873,577	23.9%
237310: Highway, street, and bridge construction	\$21,381,349	17.7%
238150: Glass and glazing contractors	\$939,914	0.8%
238190: Other foundation, structure, and building exterior contractors	\$115,682	0.1%
238210: Electrical contractors and other wiring installation contractors	\$21,853,958	18.1%
238910: Site preparation contractors	\$11,011,136	9.1%
238990: All other specialty trade contractors	\$1,711,528	1.4%
541330: Engineering services	\$12,672,790	10.5%
541370: Surveying and mapping (except geophysical) services	\$337,291	0.3%
541380: Testing laboratories	\$1,180,518	1.0%
541618: Other management consulting services	\$10,456,014	8.7%
541620: Environmental consulting services	\$1,411,203	1.2%
541690: Other scientific and technical consulting services	\$1,180,518	1.0%
541990: All other professional, scientific, and technical services	\$1,686,454	1.4%
561730: Landscaping services	\$3,509,542	2.9%
561790: Other services to buildings and dwellings	\$38,561	0.0%
561990: All other support services	\$2,293,908	1.9%
<b>TOTAL</b>	<b>\$110,535,218</b>	<b>100.0%</b>

### III. PROPOSED OVERALL DBE GOAL – METHODOLOGY

Omnitrans followed the two-step process prescribed by 49 CFR Part 26.45 to develop the overall Project DBE goal as follows.

#### A. STEP 1: DETERMINATION OF A BASE FIGURE (26.45)<sup>1</sup>

To establish the Project Base Figure of the relative availability of DBEs relative to all comparable firms (DBE and non-DBE) available to bid or submit proposals on the Project, Omnitrans followed the prescribed federal methodology to determine relative availability. This was accomplished by assessing the California Unified Certification Program (CUCP) DBE Database of Certified Firms and the 2017 U.S. Census Bureau County Business Patterns Database within Omnitrans’ market area for each of the categories of work defined in Table 2.

In accordance with the formula listed below, the Base Figure is derived by:

- dividing the number of ready, willing and able DBE firms identified for each NAICS work category by the number of all firms identified within the market area for each corresponding work category (*relative availability*),

<sup>1</sup> 26.45 represents Title 49 CFR Part 26 regulatory goal setting methodology reference.

- weighting the relative availability for each work category by the corresponding work category weight from Table 2 (*weighted ratio*), and
- Adding the weighted ratio figures together.

$$\text{Base Figure} = \sum \frac{(\text{Number of Ready, Willing and Able DBEs})}{(\text{Number of All Ready, Willing and Able Firms})} \times \text{Weighted Ratio}$$

⇒ For the numerator: CUCP DBE Database of Certified Firms

⇒ For the denominator: 2017 U.S. Census Bureau County Business Patterns Database

A concerted effort was made to ensure that the scope of businesses included in the numerator were as close as possible to the scope included in the denominator. The result of the Base Figure calculation is shown in Table 3.

- Column A lists the category of work (NAICS) code and title.
- Column B lists the estimated percentage of each NAICS code (the estimated FTA dollars for each NAICS code divided by the grand total of all estimated FTA dollars) from Table 2.
- Column C lists number of DBEs in the market area for each NAICS code from the California Unified Certification Program (CUCP) DBE Database of Certified Firms.
- Column D lists number of all firms (DBE and non-DBE) in the market area for each NAICS code from the 2017 U.S. Census Bureau County Business Patterns Database.
- Column E lists the DBE availability for each NAICS code (the number of DBEs divided by the number of all firms, multiplied by the estimated NAICS percentage).
- The weighted base figure is the sum of the DBE availability for each NAICS code.

TABLE 3

A	B	C	D	E
NAICS Code: Category of Work	Est. % by NAICS	DBEs	All Firms	Weighted Ratio
236220: Commercial and institutional building construction	23.9%	77	1,127	1.6%
237310: Highway, street, and bridge construction	17.7%	71	128	9.8%
238150: Glass and glazing contractors	0.8%	8	230	0.0%
238190: Other foundation, structure, and building exterior contractors	0.1%	19	164	0.0%
238210: Electrical contractors and other wiring installation contractors	18.1%	77	2,360	0.6%
238910: Site preparation contractors	9.1%	39	472	0.8%
238990: All other specialty trade contractors	1.4%	49	737	0.1%
541330: Engineering services	10.5%	117	1,857	0.7%
541370: Surveying and mapping (except geophysical) services	0.3%	16	93	0.0%
541380: Testing laboratories	1.0%	19	214	0.1%
541618: Other management consulting services	8.7%	103	162	5.5%
541620: Environmental consulting services	1.2%	78	324	0.3%
541690: Other scientific and technical consulting services	1.0%	99	1,577	0.1%
541990: All other professional, scientific, and technical services	1.4%	38	778	0.1%
561730: Landscaping services	2.9%	15	1,441	0.0%
561790: Other services to buildings and dwellings	0.0%	13	368	0.0%

A	B	C	D	E
NAICS Code: Category of Work	Est. % by NAICS	DBEs	All Firms	Weighted Ratio
561990: All other support services	1.9%	20	403	0.1%
<b>Weighted Base Figure</b>				<b>19.8%</b>

**B. STEP 2: ADJUSTING THE BASE FIGURE**

Upon establishing the Base Figure, Omnitrans reviewed and assessed other known evidence potentially impacting the relative availability of DBEs within the market area, in accordance with prescribed narrow tailoring provisions as set forth under 49 CFR Part 26.45: Step 2, DBE Goal Adjustment Guidelines.

***Past Omnitrans DBE Goal Attainments/Commitments***

Historical DBE participation attainments provide demonstrable evidence of DBE availability and capacity to perform on Omnitrans projects. As Omnitrans does not have comparable projects of similar size and scope to the Project, no adjustment to the Base Figure resulted from this consideration.

***Omnitrans’ Bidders List***

The Bidders List serves as important demonstrable evidence of DBE’s availability and capacity to perform, however, Omnitrans’ available Bidders List is limited to mostly projects outside the scope of work on the Project and is not representative of all Bidders/firms available and capable of performing work under the defined work categories. Therefore, no adjustment to the Base Figure was made in consideration of this factor.

***Evidence from Disparity Studies***

Omnitrans has not conducted a disparity study nor does it possess evidence on hand of discrimination in its transportation contracting program. Omnitrans has considered the use of the FTA and FHWA Caltrans Disparity Studies in this goal setting process, however, has declined to apply these results here since the nature of procurements covered under the Caltrans FTA and FHWA Studies are significantly different from the Project. The Caltrans FTA study includes a statewide market area for transit-related contracts, and the Caltrans FHWA study also includes a statewide market area and primarily highway projects, which are significantly different from this single transit project covered under FTA funds received by Omnitrans. For these reasons, Omnitrans will not be making an adjustment to the base figure using evidence from the Caltrans Disparity Studies.

***Other Agency DBE Goals***

Omnitrans surveyed other U.S. DOT recipients, including FTA and FHWA recipients within Omnitrans’ the market area for the overall project DBE goal and within the southern California region to assess their DBE goals to see if an adjustment to the Base Figure is warranted. Agencies included in the survey were the San Bernardino County Transportation Authority (SBCTA), the Riverside County Transportation Commission (RCTC), the Orange County Transportation Authority (OCTA), and the San Diego Association of Governments (SANDAG).

TABLE 4

AGENCY	PROJECT NAME	DBE GOAL
SBCTA	Interstate-10 Widening (FHWA)	10%
RCTC	Interstate-15 Express Lanes Project (FHWA)	10%
OCTA	Interstate-405 Improvement Project (FHWA)	16%

RCTC	State Route-91 Corridor Improvement Project (FHWA)*	9.4%
SANDAG	Mid-Coast Transit Corridor Project (FTA)*	11.3%
RCTC	San Jacinto Branch Line Commuter Rail - Perris Valley Line (FTA)*	12.4%
<b>AVERAGE PROJECT DBE GOAL</b>		<b>11.5%</b>

\* Overall Project DBE Goals

The calculated average overall DBE goal amounted to 11.5%, which is lower than the Omnitrans Base Figure of 19.8%. Omnitrans has made an adjustment to the Base Figure by averaging the Base Figure with the Average Project DBE Goal, as shown in Table 5 below.

TABLE 5

Base Figure (A)	19.8%
Median DBE Attainment (B)	11.5%
<b>Adjusted Base Figure (A+B)/2</b>	<b>15.7%</b>

**Other Evidence**

Omnitrans has not received any anecdotal evidence nor is aware of any other factors or adverse considerations that would have a material effect on DBEs availability within Omnitrans’ market place, or on DBEs ability to participate (meeting bonding, insurance and financial requirements) on the Project at this time. However, the public facilitation process may result in the identification of evidence that may have a material effect on the proposed DBE goal’s Base Figure which would require an adjustment. Prior to finalizing this goal-setting process and establishing the Overall Project DBE Goal, this factor will once again be considered if new evidence is identified. Omnitrans will continue to explore and consider all available evidence that materially would affect the opportunities for DBEs to form, grow, and compete in developing this and future Overall DBE goals, as applicable.

**C. RACE-NEUTRAL/RACE-CONSCIOUS PROJECTIONS**

Omnitrans has not conducted a disparity study nor does it possess evidence on hand of discrimination in its transportation contracting program. Omnitrans has considered the use of the Caltrans Disparity Study to determine whether discrimination exists in its transportation contracting program; however, Omnitrans is unable to apply the results of this study since the nature of procurements covered under the Caltrans study include primarily highway projects, which are significantly different from this transit project covered under FTA funds received by Omnitrans. As such, and in accordance with guidance issued by the US DOT in response to the Western States Paving Co. case, Omnitrans projects to meet the overall DBE project goal through race-neutral means.

**IV. GOAL APPLICATION**

In accordance with Section 26.45(e)(3), the Proposed Overall Project DBE Goal is expressed as a percent of the anticipated FTA funds to be expended on the WCC Project, as follows:

TABLE 6



Total Estimated Project Value	\$120,653,941
Estimated Federal Dollar Value	\$65,153,128
Estimated Federal %	54%
<b>Adjusted Base Figure</b>	<b>15.7% x 54% = 8.5%</b>

The ratio between the total estimated Project value and the estimated federal dollar value is assumed to be the same for all contracts under the West Valley Connector project.

Omnitrans proposes an Overall Project DBE goal of 8.5%. The proposed Overall Project DBE Goal is a Race Neutral goal for Omnitrans. Omnitrans and SBCTA will implement race neutral measures to achieve this goal, as generally described in the following section.

**PROJECTION OF DBE PARTICIPATION ANTICIPATED BY FISCAL YEAR**

The following table shows the anticipated level of DBE participation through the life of the Project. **The contracts covered by the overall Project DBE goal start in 2022 and are expected to end on or before March 2024.**

TABLE 7

Project Year	Anticipated DBE Participation
Year 1	2.6%
Year 2	4.2%
Year 3	1.7%
<b>Total Overall Project DBE Goal</b>	<b>8.5%</b>

**V. RACE-NEUTRAL IMPLEMENTATION MEASURES**

In accordance with Title 49 CFR Part 26.51, Omnitrans understands its obligation to meet the maximum feasible portion of the Proposed Overall Project DBE Goal by utilizing race-neutral means of facilitating DBE participation. Omnitrans plans to require full implementation of the following race-neutral measures in conjunction with others necessary to meet DOT’s DBE program objectives and Omnitrans’ Overall Project DBE goal, including but not limited to:

- Host and participate in workshops for the DBE and small business contracting community. Omnitrans and SBCTA will attend and participate in vendor fairs hosted by underrepresented groups and other public agencies.
- Unbundle project bid packages, provide pre-bid/pre-proposal conferences to afford networking opportunities for primes and subcontractors. Omnitrans and SBCTA will promote and encourage teaming opportunities between prospective prime contractors and the DBE and small business contracting community. Arrange solicitation, times for the presentation of bids, quantities, specifications, and delivery schedules in ways that facilitate DBE and other small business participation.

- Structure the Mainline solicitation to remove barriers such as the inability to obtain bonding or financing (e.g., by such means as simplifying the bonding process, reducing bonding requirements, eliminating the impact of surety costs from bids, and providing services to help DBEs, and other small businesses, obtain bonding and financing).
- Include evaluation criteria that demonstrates bidder commitments to utilizing DBEs on Project.
- Structure the Mainline solicitation to require bidders to describe their DBE outreach before and after award, and how technical assistance will be provided to DBEs.
- Solicit DBEs and other small businesses participation by carrying out information programs through use of advertisement and other communication methods on contracting procedures and specific contract opportunities (e.g., ensuring the inclusion of DBEs, and other small businesses, on recipient mailing lists of bidders; ensuring the dissemination to bidders on prime contracts of lists of potential subcontractors; provision of information in languages other than English, where appropriate).
- Actively promote the small business conferences, programs, and support services offered by other agencies that have established DBE and other small business programs as a supportive service to help develop and improve immediate and long-term business management, record keeping, and financial and accounting capability for DBEs and other small businesses. Omnitrans will participate in virtual vendor fairs and web-based events.
- Advise its contracting community of the online directory of certified DBEs, found at the California Unified Certification Program website: <https://dot.ca.gov/programs/civil-rights/dbe-search>.

## VI. FOSTERING SMALL BUSINESS PARTICIPATION<sup>2</sup>

---

Omnitrans has implemented several strategies to foster small business participation in its contracting process. These include the following:

- In multi-year design-build contracts or other large contracts (e.g., “megaprojects”) requiring bidders on the prime contract to specify elements of the contract or specific subcontracts that are of a size that small businesses, including DBEs, can reasonably perform.
- On prime contracts not having DBE contract goals, consider requiring the prime contractor to provide subcontracting opportunities of a size that small businesses, including DBEs, can reasonably perform, rather than self-performing all the work involved.
- Ensuring that a reasonable number of prime contracts are of a size that small businesses, including DBEs, can reasonably perform.

Omnitrans is actively implementing the above strategies in our DBE program to foster small business participation on this Project.

---

<sup>2</sup> See Title 49 CFR Part 26 Section 26.39 “Fostering Small Business Participation.”

## VII. PUBLIC PARTICIPATION AND FACILITATION

---

In accordance with Public Participation Regulatory Requirements of 49 CFR Part 26, minority, women, local business associations, and community organizations within Omnitrans' market area have been consulted and provided an opportunity to review the triennial goal analysis and provide input.

Omnitrans issued a Public Notice (ATTACHMENT 1) on Omnitrans' website announcing the Proposed FTA Project DBE Goal-Setting Methodology and informed the public that the proposed goal and rationale are available for inspection. The notice also announced a public webinar to provide information about the DBE Program and Overall Project DBE Goal-Setting Methodology, including instructions to participate, and that Omnitrans will accept comments for 30 days or until September 25, 2020.

Omnitrans reached out to local minority, women, and community business organizations to invite them to participate in the public webinar. Each organization was contacted multiple times via email, phone, call, and e-blast (ATTACHMENT 2). Omnitrans hosted the public webinar on September 24, 2020. Omnitrans was prepared to present a brief overview of the DBE program (ATTACHMENT 3), the project specific goal-setting and answer any questions, but no one participated in the webinar. A summary of all efforts made to contact organizations and two comments received are listed in ATTACHMENT 4.

## ATTACHMENT 1

The screenshot shows the Omnitrans website interface. At the top, there is a navigation bar with the Omnitrans logo, a search bar, and links for GETTING AROUND, AGENDAS, BUSINESS/EMPLOYMENT, NEWS AND RESOURCES, and ABOUT. Below this is a secondary navigation bar with icons and labels for TRIP PLANNER, MAPS & SCHEDULES, NEXTRIP, ALERTS, and STORE. The main content area is titled "Procurement" and contains several paragraphs of text and a list of bullet points. To the right, there is a "CONTACT US" sidebar with various contact information sections.

### Procurement

Thank you for your interest in doing business with Omnitrans. We are committed to providing an equal opportunity for all business enterprises to participate in our purchasing and contracting activities.

Both formal and informal solicitations may be processed through our online system, **ProcureNow**. All responses are due BEFORE the time shown on each solicitation. Late responses cannot be accepted.

It is the bidder's/proposer's responsibility to ensure that the most complete and current version of the solicitation, including addenda, has been downloaded. Please note: Contractors/Vendors are solely responsible for maintaining up to date and accurate information. Vendors may edit their profile at any time.

#### ProcureNow

Omnitrans' new e-Procurement Portal will allow prospective bidders to do the following:

- Register to receive notifications of future opportunities by [signing up for our new e-Procurement Portal](#) and selecting "Subscribe" to create an account.
- Follow along with updates to existing opportunities by finding the opportunity and clicking the "Follow" button. This will allow all interested bidders to receive amendments and addenda notices automatically.
- Submit questions and receive answers regarding open bids opportunities.
- Guide vendors through the process of responding electronically to RFPs, bids, etc. to ensure your bids have been accurately completed.
- Receive near-real time support when bidders have any questions about how to use ProcureNow. Typical wait times for support responses are under 15 minutes.
- Ultimately, serve as a single location for all bid opportunities issued by Omnitrans.

**There is no cost for vendors to register, navigate, or participate in ProcureNow.**

- To get started, [click here](#), and sign up for an account.
- You'll receive an email to activate your account.
- Then subscribe to our bids by [navigating here](#) and clicking the green subscribe button
- For more information about how to register, please see our [help file](#).

[Contracting/Purchasing Opportunities](#)  
[Register as a Bidder](#)  
[Category/Commodity Codes](#)

#### Disadvantaged Business Enterprise (DBE) Program

Omnitrans administers a DBE program in accordance with 49 CFR Part 26: Participation by Disadvantaged Business Enterprises in U.S. Department of Transportation (DOT) Programs, as a condition of financial assistance agreements with the DOT.

[2019 Omnitrans DBE Program](#)  
[DBE Program Information](#)

#### West Valley Connector Project

[Proposed Federal Transit Administration Disadvantaged Business Enterprise \(DBE\) Project Goal](#)

### CONTACT US

#### Omnitrans Headquarters

1700 W. Fifth Street  
San Bernardino, CA 92411  
(909) 379-7100  
[Map & Directions](#)  
Office Hours  
8:00 am to 5:00 pm weekdays.  
Closed weekends & holidays.

#### Lost and Found

(909) 379-7100

#### San Bernardino Transit Center

599 W. Rialto Avenue  
San Bernardino, CA 92401  
[Map & Directions](#)  
Customer Service Hours  
7:00 am to 6:00 pm weekdays,  
8:00 am to 5:00 pm on Saturdays.

#### Omnitrans Bus Information

1 (800) 9-OMNIBUS or  
1 (800) 966-6428  
Hours of Operation  
8:00 am to 6:00 pm, Monday through  
Friday.

#### TRS (for hearing impaired)

Dial 711

#### Special Transportation Services

(909) 379-7341

#### Access ADA Service Reservations

East Valley (909) 383-1680  
West Valley 1 (800) 990-2404



#### Contact Us Feedback Form

For questions, comments, complaints, or suggestions about Omnitrans bus service, please use the online [Contact Us Feedback Form](#).

#### Title VI

For Title VI complaints, please use the online [Title VI Complaint Form](#).

## ATTACHMENT 2



### Proposed FTA DBE Project Goal WEST VALLEY CONNECTOR PROJECT

In accordance with 49 CFR Part 26.45(g), OmniTrans a recipient of U.S. Department of Transportation (USDOT) assistance, and the San Bernardino County Transportation Authority (SBCTA), a subrecipient of OmniTrans, announce a proposed Federal Transit Administration (FTA) Disadvantaged Business Enterprise (DBE) Project goal of 8.5% for the West Valley Connector Project.

Total Overall Project DBE Goal

8.5%

[View Public Notice](#)

---

#### Webinar TOMORROW




OmniTrans and SBCTA will be hosting a webinar for public participation on:

**Thursday, September 24th at 10:00 a.m.**

[Register Here!](#)

---

#### Agenda

Introduction	Project DBE Goal	Next Steps
 <ul style="list-style-type: none"><li>• Overview of the West Valley Connector Project</li><li>• Overall Project Period</li></ul>	 <ul style="list-style-type: none"><li>• Market Area</li><li>• Categories of Work</li><li>• Base Figure</li><li>• Adjusted Project Goal</li></ul>	 <ul style="list-style-type: none"><li>• Public Comment</li><li>• Finalize Goal</li><li>• Submit Finalized Goal to FTA</li></ul>

---

#### Unable to Attend?

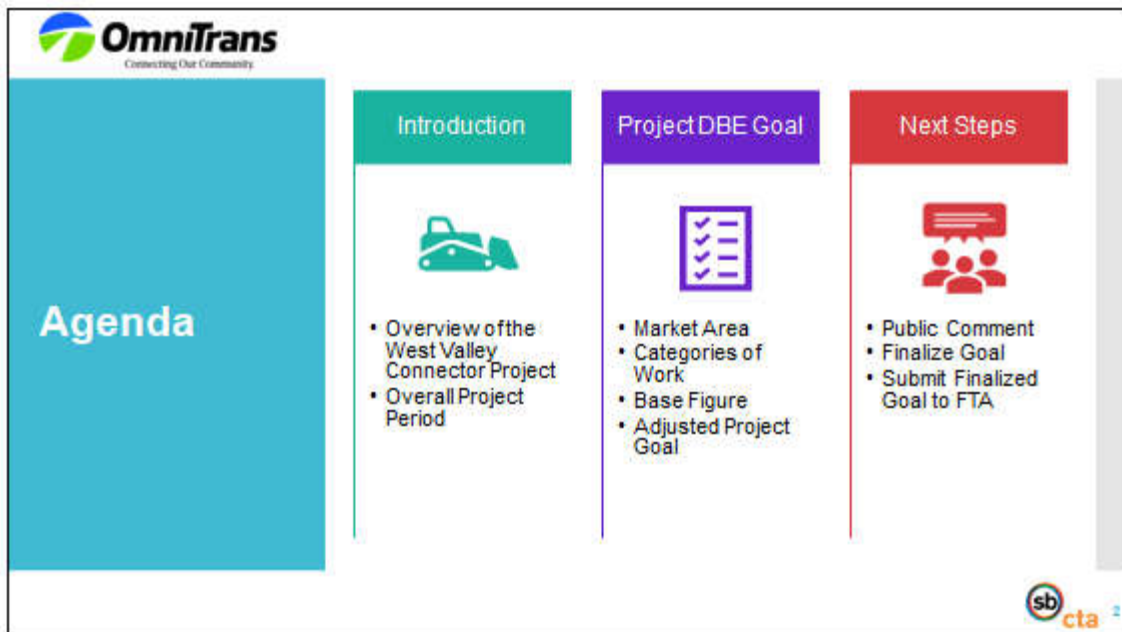
Comments Accepted through September 25, 2020

For additional information on the West Valley Connector Project DBE Goal-Setting Methodology, please contact the OmniTrans DBE Liaison Officer, Frank Holland, at [frank.holland@omnitrans.org](mailto:frank.holland@omnitrans.org). Written comments can also be sent directly to the FTA, Nicholas Sun, Acting Regional Civil Rights Officer, at 90 7<sup>th</sup> Street, Suite 15-300, San Francisco, CA 94103.

### ATTACHMENT 3



1



2

## Introduction

- Overview of the West Valley Connector (WVC) Project
  - The mainline construction and construction management contracts are estimated at approximately **\$120 million** with **54%** of the Project costs utilizing Federal Transit Administration (FTA) funds.
- Overall Project Period
  - The proposed Overall Project DBE Goal covers the WVC Project period between **2022 and 2024**.
  - This is separate and apart from OmniTrans' existing FTA Overall Goal for Federal Fiscal Years (FFY) 2019 through 2021.

3

## DBE Goal Development

MARKET AREA

ANTICIPATED PROJECTS

CATEGORIZATION OF WORK

DBE BASE FIGURE

ADJUSTED GOAL

4

**Market Area**

- Market Area – the area in which the agency spends the substantial majority of its contracting dollars.
- Required to evaluate the availability of DBEs to perform on Omnitrans FTA-assisted contracts.

Market Area is Los Angeles and San Bernardino Counties

5

Description	Amount
Mainline Construction	\$93,670,680
Construction Management	\$16,864,538
Program Management	\$10,118,723
<b>Total WVC Project Cost</b>	<b>\$120,653,941</b>

Anticipated FTA-Assisted Projects For FFY 2019-2021

6



## Categorization of Work

NAICS Code: Category of Work	Est. \$ by NAICS	Est. % by NAICS
236220: Commercial and institutional building construction	\$28,873,577	23.9%
237310: Highway, street, and bridge construction	\$21,381,349	17.7%
238150: Glass and glazing contractors	\$939,914	0.8%
238190: Other foundation, structure, and building exterior contractors	\$115,682	0.1%
238210: Electrical contractors and other wiring/installation contractors	\$21,853,958	18.1%
238910: Site preparation contractors	\$11,011,136	9.1%
238990: All other specialty trade contractors	\$1,711,528	1.4%
541330: Engineering services	\$12,672,790	10.5%
541370: Surveying and mapping (except geophysical) services	\$337,291	0.3%
541380: Testing laboratories	\$1,180,518	1.0%
541618: Other management consulting services	\$10,456,014	8.7%
541620: Environmental consulting services	\$1,411,203	1.2%
541690: Other scientific and technical consulting services	\$1,180,518	1.0%
541990: All other professional, scientific, and technical services	\$1,686,454	1.4%
561730: Landscaping services	\$9,509,542	7.9%
561790: Other services to buildings and dwellings	\$38,561	0.0%
561990: All other support services	\$2,293,908	1.9%
<b>TOTAL</b>	<b>\$120,553,941</b>	<b>100.0%</b>

7

## DBE Base Figure

$$\text{Base Figure} = \sum \frac{(\text{Number of Ready, Willing and Able DBEs})}{(\text{Number of All Ready, Willing and Able Firms})} \times \text{Weighted Ratio}$$

NAICS Code: Category of Work	Est. % by NAICS	DBEs	All Firms	Weighted Ratio
236220: Commercial and institutional building construction	23.9%	77	1,127	1.6%
237310: Highway, street, and bridge construction	17.7%	71	128	0.6%
238150: Glass and glazing contractors	0.8%	8	230	0.0%
238190: Other foundation, structure, and building exterior contractors	0.1%	19	164	0.0%
238210: Electrical contractors and other wiring/installation contractors	18.1%	77	2,380	0.6%
238910: Site preparation contractors	9.1%	39	472	0.2%
238990: All other specialty trade contractors	1.4%	49	737	0.1%
541330: Engineering services	10.5%	117	1,897	0.1%
541370: Surveying and mapping (except geophysical) services	0.3%	18	93	0.0%
541380: Testing laboratories	1.0%	19	214	0.1%
541618: Other management consulting services	8.7%	103	162	3.3%
541620: Environmental consulting services	1.2%	78	324	0.3%
541690: Other scientific and technical consulting services	1.0%	99	1,577	0.1%
541990: All other professional, scientific, and technical services	1.4%	38	778	0.1%
561730: Landscaping services	7.9%	15	1,441	0.0%
561790: Other services to buildings and dwellings	0.0%	13	389	0.0%
561990: All other support services	1.9%	20	403	0.1%
<b>Weighted Base Figure</b>				<b>19.8%</b>

8

### Average Project DBE Goal (Median DBE Attainment)

AGENCY	PROJECT NAME	DBE GOAL
SBCTA	Interstate-10 Widening (F HWA)	10%
ICTC	Interstate-15 Express Lanes Project (F HWA)	10%
DCTA	Interstate-405 Improvement Project (F HWA)	16%
ICTC	State Route-91 Corridor Improvement Project (F HWA)	9.4%
SANDAG	Mt-Coach Transit Corridor Project (F TAP)	11.3%
ICTC	San Jacinto Green Line Commuter Rail - Perris Valley Line (F TAP)	12.4%
<b>AVERAGE PROJECT DBE GOAL</b>		<b>11.5%</b>

Base Figure (A)	19.8%
Median DBE Attainment (B)	11.5%
<b>Adjusted Base Figure (A+B)/2</b>	<b>15.7%</b>

**Adjusted Base Figure**

9

### Goal Application

Total Estimated Project Value	\$120,653,941
Estimated Federal Dollar Value	\$65,153,128
Estimated Federal %	54%
Adjusted Base Figure	15.7% x 54% = 8.5%

**8.5%** Omnitrans proposes an Overall Project DBE goal of 8.5%. The proposed Overall Project DBE Goal is a Race Neutral goal for Omnitrans. Omnitrans and SBCTA will implement race neutral measures to achieve this goal.

10

West Valley Connector Overall Project DBE Goal Methodology

8.5%

Next Steps:

1. Accept Comments
2. Analyze Responses
3. Revise Goal, as needed
4. Finalize Goal
5. Submit Final Goal to FTA

11

Questions?  
OmniTrans and San Bernardino County Transportation Authority

12

## ATTACHMENT 4

Organization	Outreach Effort	Comments Received
<p>American Indian Chamber of Commerce of California Tracy Stanhoff, President 714-898-6364 tracy@adproweb.com</p>	<p>9/9 Omnitrans spoke with Carol who notified them that Tracy had stepped away from her desk and would be back later to provide comments on the WVC goal methodology. 9/24 Omnitrans spoke with Carol for follow-up. Omnitrans reminded Carol of the webinar and asked if Tracy could participate.</p>	<p>None received.</p>
<p>American Business Women's Association - Inland Empire Connie Young, President 909-213-6053 c4eryoung@aol.com Deborah Kristianto, President 909-618-2616 president@abaie.org</p>	<p>9/9 Omnitrans left a voicemail requesting feedback on the WVC goal methodology and provided contact information for follow-up. 9/24 Omnitrans left voicemail.</p>	<p>None received.</p>
<p>Black Chamber of Commerce Inland Empire Tammy Martin-Ryles, President 1-844-332-2243 ext. 902 info@bccinlandempire.com</p>	<p>9/9 Omnitrans left a voicemail requesting feedback on the WVC goal methodology and provided contact information for follow-up. 9/24 Omnitrans left voicemail.</p>	<p>None received.</p>
<p>Filipino-American Chamber of Commerce - Inland Empire (FACE-IE) Paul Claudio 951-240-8911 facc.inlandempire@gmail.com pac.lender@gmail.com</p>	<p>9/9 Omnitrans left a voicemail requesting feedback on the WVC goal methodology and provided contact information for follow-up. 9/24 Omnitrans left voicemail.</p>	<p>None received.</p>

Organization	Outreach Effort	Comments Received
<p>Greater Corona Hispanic Chamber of Commerce            Nick Lopez, President            951-278-4755            info@gchcc.com            George Beloz, Vice President            gbeloz@sbcglobal.net</p>	<p>8/26 Omnitrans sent an e-blast to the organization with information on the project specific goal and the upcoming webinar.            8/28 Omnitrans sent a follow-up e-blast.            9/1 Omnitrans sent a follow-up e-blast.            9/3 Omnitrans sent a follow-up e-blast.            9/8 Omnitrans sent a follow-up e-blast.            9/9 Omnitrans left a voicemail requesting feedback on the WVC goal methodology and provided contact information for follow-up.            9/10 Omnitrans sent a follow-up e-blast.            9/15 Omnitrans sent a follow-up e-blast.            9/17 Omnitrans sent a follow-up e-blast.            9/21 Omnitrans sent a follow-up e-blast.            9/23 Omnitrans sent a follow-up e-blast.            9/24 Omnitrans left voicemail.</p>	<p>None received.</p>
<p>Greater Riverside Hispanic Chamber of Commerce            Cindy Roth, President            951-683-7100 Ext. 219            croth@riverside-chamber.com</p>	<p>8/26 Omnitrans sent an e-blast to the organization with information on the project specific goal and the upcoming webinar.            8/28 Omnitrans sent a follow-up e-blast.            9/1 Omnitrans sent a follow-up e-blast.            9/3 Omnitrans sent a follow-up e-blast.            9/8 Omnitrans sent a follow-up e-blast.            9/9 Omnitrans left a voicemail requesting feedback on the WVC goal methodology and provided contact information for follow-up.            9/10 Omnitrans sent a follow-up e-blast.            9/15 Omnitrans sent a follow-up e-blast.            9/17 Omnitrans sent a follow-up e-blast.            9/21 Omnitrans sent a follow-up e-blast.            9/23 Omnitrans sent a follow-up e-blast.            9/24 Omnitrans spoke with Janet who transferred</p>	<p>None received.</p>

Organization	Outreach Effort	Comments Received
<p>High Desert Hispanic Chamber of Commerce Eric J Camarena, President 760-241-6661 *website portal for email</p>	<p>Omnitrans to Cindy's voicemail. Omnitrans left a voicemail.</p> <p>8/26 Omnitrans sent an e-blast to the organization with information on the project specific goal and the upcoming webinar. 8/28 Omnitrans sent a follow-up e-blast. 9/1 Omnitrans sent a follow-up e-blast. 9/3 Omnitrans sent a follow-up e-blast. 9/8 Omnitrans sent a follow-up e-blast. 9/9 Omnitrans spoke with Eric who informed Omnitrans that Iris is the president and can best answer the questions. Omnitrans left contact information for future follow-up. 9/10 Omnitrans sent a follow-up e-blast. 9/15 Omnitrans sent a follow-up e-blast. 9/17 Omnitrans sent a follow-up e-blast. 9/21 Omnitrans sent a follow-up e-blast. 9/23 Omnitrans sent a follow-up e-blast. 9/24 Omnitrans left voicemail.</p>	<p>None received.</p>
<p>Inland Empire African American Chamber Carl Dameron 909-534-9500 carl@dameroncommunications.com</p>	<p>8/26 Omnitrans sent an e-blast to the organization with information on the project specific goal and the upcoming webinar. 8/28 Omnitrans sent a follow-up e-blast. 9/1 Omnitrans sent a follow-up e-blast. 9/3 Omnitrans sent a follow-up e-blast. 9/8 Omnitrans sent a follow-up e-blast. 9/9 Omnitrans spoke with Carl who was very passionate about the goal setting being higher than 8.5%. 9/10 Omnitrans sent a follow-up e-blast. 9/15 Omnitrans sent a follow-up e-blast. 9/17 Omnitrans sent a follow-up e-blast.</p>	<p>He asserted the goal should be representative of the population instead of the businesses available to address the disparity he's experienced and seen in the area.</p> <ul style="list-style-type: none"> <li>• Omnitrans explained that the DBE goal methodology is based on the relative availability of DBEs to perform the anticipated work.</li> <li>• Omnitrans asked for his suggestions on how to increase participation for this project and he suggested to "aggressively outreach" to companies to be more inclusive with their teams.</li> </ul>

Organization	Outreach Effort	Comments Received
	9/21 Omnitrans sent a follow-up e-blast. 9/23 Omnitrans sent a follow-up e-blast.	
National Association of Women in Construction - San Bernardino/Riverside Denise Bomhoff 909-383-9535 Marilyn VanTassel 909-721-8220 mvantasselg@att.net Renae Truex 909-798-2222 rtruex@smc-cpas.com	8/26 Omnitrans sent an e-blast to the organization with information on the project specific goal and the upcoming webinar. 8/28 Omnitrans sent a follow-up e-blast. 9/1 Omnitrans sent a follow-up e-blast. 9/3 Omnitrans sent a follow-up e-blast. 9/8 Omnitrans sent a follow-up e-blast. 9/9 Omnitrans spoke with Denise about the WVC goal setting and requested any comments or questions she had regarding the goal setting. She did not have any comments regarding the goal setting. 9/10 Omnitrans sent a follow-up e-blast. 9/15 Omnitrans sent a follow-up e-blast. 9/17 Omnitrans sent a follow-up e-blast. 9/21 Omnitrans sent a follow-up e-blast. 9/23 Omnitrans sent a follow-up e-blast.	None received.
Ontario Hispanic Chamber of Commerce Martin Cueva, President 909-983-8810 martin@martincueva.com	8/26 Omnitrans sent an e-blast to the organization with information on the project specific goal and the upcoming webinar. 8/28 Omnitrans sent a follow-up e-blast. 9/1 Omnitrans sent a follow-up e-blast. 9/3 Omnitrans sent a follow-up e-blast. 9/8 Omnitrans sent a follow-up e-blast. 9/9 Omnitrans attempted to call Chamber however the number is no longer in service.	None received.

Organization	Outreach Effort	Comments Received
Southern California Black Chamber of Commerce Dee Goins, President 888-466-7408 Ext.23 dee@blackchamberofcommerce.org	9/9 Omnitrans spoke with Dee who is concerned with the level of bonding required for DBEs to participation.	She suggests to make the bonding requirement achievable for those businesses or to have the prime contractor "carry" the bonding requirement in order to incorporate more DBEs on the team. <ul style="list-style-type: none"> <li>• Omnitrans advised Dee of the SBA Bonding Program.</li> </ul>
Women in Transportation (WTS) - Inland Empire contactwtsie@gmail.com	8/26 Omnitrans sent an e-blast to the organization with information on the project specific goal and the upcoming webinar. 8/28 Omnitrans sent a follow-up e-blast. 9/1 Omnitrans sent a follow-up e-blast. 9/3 Omnitrans sent a follow-up e-blast. 9/8 Omnitrans sent a follow-up e-blast. 9/10 Omnitrans sent a follow-up e-blast. 9/15 Omnitrans sent a follow-up e-blast. 9/17 Omnitrans sent a follow-up e-blast. 9/21 Omnitrans sent a follow-up e-blast. 9/23 Omnitrans sent a follow-up e-blast.	



